

fluxa.p.y



The Petrel 9 Series Fluorescent Luminaire Range
Standard & Emergency Versions
Application, Installation and Maintenance Instructions



General Data

Certificate No. SIRA 00 ATEX3071 Protection II 2 G and 3 D
Models available 2x18W, 2x36W and 2x58W - Standard and Emergency versions with integral battery.
All versions T5 @ -20 to +25°C T4 @ -20 to +55°C
In accordance with EEC Directive 89/336/EEC for Electromagnetic Compatibility.
The luminaire utilises electronic control and is suitable for operation from an electrical supply of 220-250V 50/60Hz.
Some versions available for 110V and up to 277V. Ask Manufacturer for details.

WARNING

Under no circumstances must any additional holes be drilled in the equipment as this would invalidate certification.
The luminaire should not be used in conditions of severe low frequency vibration (<5Hz, amplitude>1.5mm). If in doubt, contact the Manufacturer.
Certification and specification data is shown on the equipment name-plate. Check that the equipment is suitable for the application concerned - i.e. that the gas grouping, temperature classification, equipment voltage etc. are appropriate to the application. This may be done by reference to BS EN 60079 for UK installations or by equivalent Codes of Practice for other countries. The equipment must be installed by suitably trained and qualified personnel and as required by the applicable Codes of Practice for the country concerned.

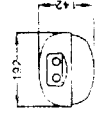
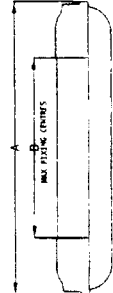
Special Considerations

The equipment is designed and tested to meet IP66 but in order to maintain the validity of the certification the enclosure must maintain a rating of IP54 minimum. When re-closing the luminaire, care must be taken to ensure that the gasket is in good condition and fully functional and that the cover seats properly onto the gasket face. The enclosure material is principally polycarbonate with an EPDM gasket and the performance of these materials should be considered with regard to attack from aggressive substances which may be present in the hazardous area. Clean enclosure only with a damp cloth.

Mounting Arrangements

Mounting is by two retained M8 sliding lugs which must be positioned to suit the installation. They should be positioned as required, rotated 90°, and then locked in the position using the lock nut provided. Mounting accessories are available

Model	A	B
2 x 18W	765	450
2 x 36W	1373	1060
2 x 58W	1675	1560



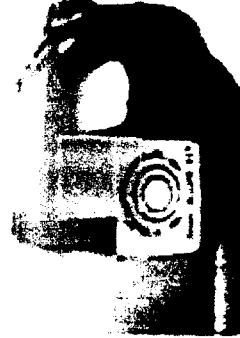
Access to the Enclosure

WARNING

Where emergency luminaires with internal battery back-up are involved the luminaire must be isolated elsewhere before opening the enclosure.

Access to the enclosure is obtained by removing the sealing plug, rotating the hexagon head locking screw fully in the direction of the arrow and pulling the diffuser gently from the metal body housing. The diffuser will remain suspended by the straps provided.

Opening of the enclosure automatically actuates microswitches interlocked with the diffuser cover which provide isolation of the electrical supply.



WARNING

These microswitches must not be operated with the enclosure open under any circumstances.



Electrical Connections

Access for electrical connection is obtained by removing the lamps (if fitted), removing the internal polished reflector and sliding the lampholder plate towards the centre of the luminaire.
The electrical terminals are rated to accept up to 4mm² cable with looping facility for a three phase supply.
Glanding must be made using an approved EEX e device or suitable metal gland which will ensure an IP rating of IP54 minimum.
Two M20 cable entries are provided at each end of the luminaire, three of which are fitted with approved sealing plugs to achieve a minimum rating of IP54. Ensure all unused entries are fitted with an approved sealing plug and that these are correctly fitted.
The luminaire is provided with 2.5mm² through wiring as standard which inter-connects the terminals at each end subject to a maximum circuit current of 15 A.
Luminaire is manufactured in accordance with EN 60598.
L is the permanent supply for emergency luminaires.

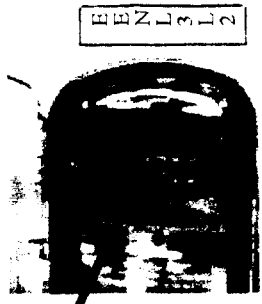
Lamp Fitting & Replacement

The luminaire is designed to accept T8 lamps of the appropriate rating. The lamps are fitted by engaging the two pins at one end of the lamp into the holes provided in the lampholder recess and sliding the lampholder back against the spring pressure until the pins at the other end of the lamp clear the holder skirt.

Maintenance & Repair

The maintenance requirements are as set down in BS EN 60079 - 17 for UK installations and by the applicable guidelines for other areas.
As a general guide, all sealing gaskets must be in good condition to ensure IP54 is maintained. When fitting replacement components, ensure that all electrical connections are correctly made. Only identical components must be used for repair or replacement. Details as below:-

Item Description	Part Number	
	18W	36W 58W
Electronic control unit - Standard luminaire	2H69001218	2H69001236 2H69001258
Electronic control unit - Emergency luminaire	2H69002218	2H69002236 2H69002258
Battery pack	6H38-409003	6H38-409004
Diffuser assembly	6H23-400092	6H23-400094 6H23-400095
Internal reflector	6H24-400092	6H24-400094 6H24-400095
Lampholder plate complete	3H69001090	
Complete terminal block assembly	3H69001091	
Microswitch assembly	3H69001092 (2-WIRE)	3H69001093 (4-WIRE)
Sealing plug	6H17810091	



THORN